

**IN THIS ISSUE**

Preventing Fall & Winter Colic

Horse Behaviour Safety eWorkshop

Introducing Health Flash

10th Report on Research

EquiMania! Explorer!

Upcoming Courses

Quick Links[Course Registration](#)[News](#)[More About Us](#)[Our Sponsors](#)**Featured Article****FIRST OFFERING! Horse Behaviour & Safety eWorkshop****Upcoming Events**[EquiMania! at Can-Am, Orangeville - Mar 28-31](#)**Short Courses**[Horse Behaviour & Safety eWorkshop \(Feb 25 - Mar 8 2013\)](#)[Colic eWorkshop \(March 11 - 24 2013\)](#)**Tools for Horse Owners**[Lameness Lab](#)[Horse Health Check](#)[Journey through the Joints](#)[Vaccination Equi-Planner](#)[Worms & Germs Blog](#)[Biosecurity Risk](#)**Equine Guelph E-News**

"Please forward this to a fellow horse lover!"

Dec 2012

Welcome to this month's edition of Equine Guelph news.

**EQUINE GUELPH DECLARES 2013 - "COLIC PREVENTION" YEAR!**

Equine Guelph kicks off 2013 by announcing a new eWorkshop designed to help horse owners understand colic and take preventative measures to reduce the risk of this #1 horse killer by following good stable management practices.

In this eWorkshop you will be able to:

- Identify risks factors associated with colic
- Understand different types of colic
- Detect early signs and symptoms of colic
- Assess your management plan
- Develop preventative strategies
- Implement practical ways to reduce your colic risk

In addition to funding from Standardbred Canada, investment in this project has been provided by Agriculture and Agri-Food Canada through the Canadian Agricultural Adaptation Program (CAAP). In Ontario, this program is delivered by the Agricultural Adaptation Council."

For more information about the Colic eWorkshop...**Sign Up For Equine Guelph's Colic eWorkshop March 11 - 24, 2013****FREE HORSE BEHAVIOUR & SAFETY eWorkshop****Learn Horsemanship through Understanding Behaviour**

Equine Guelph is pleased to announce the first offering of this informative **2-week online short-course February 25 - March 8, 2013 is free of charge.** Anyone who would like to learn more about the best practices for handling horses safely is encouraged to **sign up early as space is limited!**

[Calculator](#)

[Help for Horse Owners Videos](#)

Report on Research

[University of Guelph researchers discuss current projects.](#)

Hoofprints Tributes

[Share photos & stories commemorating equine friends.](#)

Donations

[Financial Contribution](#)

[Equine Guelph-OEF 'War Horse' Welfare Education Fund](#)

[Tribute](#)

[Product](#)

[Organize a Fundraiser](#)

EquiMania!

[Bring EquiMania! to your Event!](#)

[Online Games for Kids](#)

[Become a Volunteer](#)

Sign up for E-News

[Check out Equine Guelph's monthly news](#)

Read our latest bi-annual Newsletter

[Fall 2012](#)

[Archived Newsletters](#)

PARTNERS:





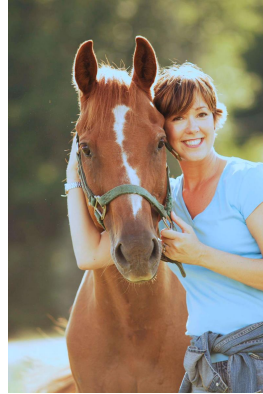


Equine Hippique Canada, Kubota Canada, SSG Riding Gloves, Saddle Up SAFELY, System Fencing, UK Ag Equine University of Kentucky, UK Healthcare, Workplace Safety & Prevention Services AND all equestrian federations across Canada.

For more information...



ANNOUNCING HEALTH flash!



Equine Guelph is pleased to announce the introduction of HEALTH flash! - a program of four seasonal health reminders to help the busy horse owner keep on top of the changes that affect the sector during the year.

The program will also provide special alerts in case of disease outbreaks and comes complete with interactive games to test your seasonal savvy.

If you are not already an Equine Guelph Enews subscriber - Sign up for Enews at www.EquineGuelph.ca to receive your first HEALTH flash! this January!

PARTNERS:



Specialists In:
Anti-inflammatories | Antibiotics
Biosecurity Products | Dewormers
Feed Supplements | Ointments



Specialists In:
Dewormers | Vaccines





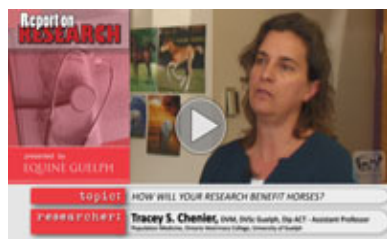



Agriculture and Agri-Food Canada / Agriculture et Agroalimentaire Canada

Investment in this project has been provided by Agriculture and Agri-Food Canada through the Canadian Agricultural Adaptation Program (CAAP). In Ontario, this program is delivered by the Agricultural Adaptation Council.



REPORT ON RESEARCH - PRESERVING FROZEN EMBRYOS



Thanks to a grant from the Knowledge Translation and Transfer Program under the OMAFRA-U of G Partnership, Equine Guelph is launching it's tenth "Report on Research" and "Help for Horse Owners" video series featuring University of Guelph Researcher, Dr. Chenier discussing research findings on preserving frozen embryos.

Read the full story...



EQUIMANIA! PHOTO CONTEST ON FACEBOOK

Keep sending us your entries:



- 2. Send your best picture of **Fun Horse Behaviour** to: egmania@uoguelph.ca along with a signed copy of our [rules sheet](#).
- 3. Tell all your friends to check out EquiMania! on  and help vote for the winning photo!



Deadline for entries will be January 15, 2013!



FREE HEALTH CHECK POSTER -



Do you know how to check if your horse is dehydrated this winter?

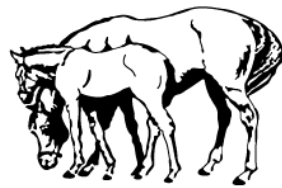
Go to Equine Guelph's interactive [Horse Health Check](#) to assess your horses overall health in just minutes.

[Read the article...](#)

[Download this poster...](#)



GIVE THE GIFT OF EDUCATION



EQUINE GUELPH
helping horses for life™

This Christmas, why not give the gift that keeps on giving?

Equine Guelph's educational offerings range from short 2 week online eWorkshops for \$75 to our more intensive 12 week courses for the avid horse enthusiast on your list.

[View all educational offerings...](#)

or consider a charitable donation to Equine Guelph to 'help horses for life'



SEASONS GREETINGS FROM EQUINE GUELPH



Photo: Dave Landry

Equine Guelph would like to wish everyone a safe and happy holiday season.

Next offering of Equine Guelph Courses Jan 2013!

COURSES

STUDY ONLINE

Award Winning Programs

These courses will start :
JANUARY 7th, 2013

Early-Bird:
December 7th

SIGN UP FOR:

Sign up Before **Dec 7th** for \$50 off!

Find out more about Equine Guelph programs, offered three times a year, through the University of Guelph.



Learn why equestrian professionals and horse enthusiasts are choosing them!

[Visit our Education Page](#)

Equine Guelph, University of Guelph, Ontario, Canada, N1G2W1, Tel: (519) 824-4120 ext. 54205

You have received this issue of Equine Guelph E-News because you have requested to be on our subscription list. If you no longer wish to receive Equine Guelph's E-news or wish to change your email information please [click here](#). Information for subscriptions is collected and protected in compliance with the University of Guelph's Guidelines on the Protection of Privacy and Access to Information. The information collected will not be shared or used by a third party and will be kept confidential. To ensure consistent delivery of this publication, please add our sender address - horses@uoguelph.ca - to your address book.

[Forward this email](#)



This email was sent to finlayd@uoguelph.ca by jbellamy@uoguelph.ca | Instant removal with [SafeUnsubscribe™](#) | [Privacy Policy](#).

| 50 McGilvray St | Guelph | Ontario | N1G 2W1 | Canada

